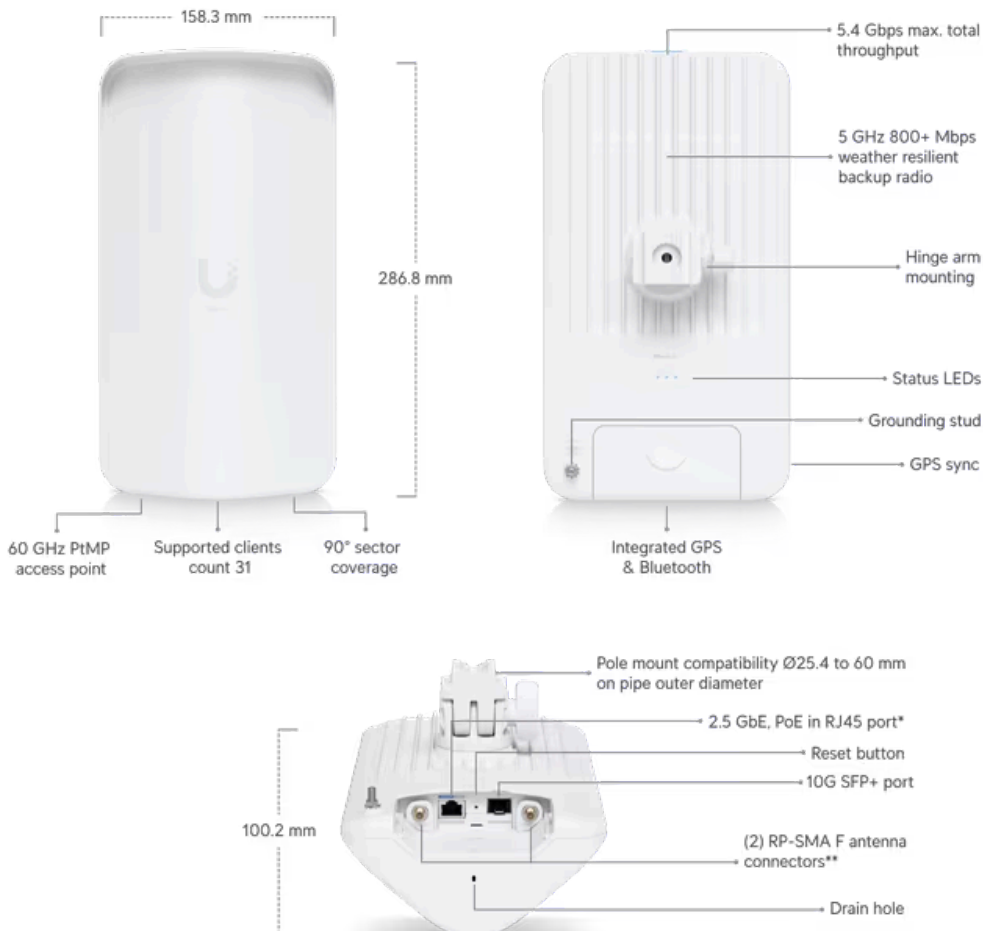


UniFi [UISP](#) Branding[60 GHz Wireless](#)[Wireless](#)[Fiber](#)[Wired](#)[Accessory Tech](#)[Wave 60 GHz](#) > [Wave AP Gen2](#)

## Wave AP Gen2

### Wave-AP-Gen2

[Datasheet](#)[Marketing Images](#)[Installation Guide](#)

\*48V DC, 0.65A 2.5 GbE PoE adapter included.

\*\*For external 5 GHz antenna (optional).

## Mechanical

Dimensions	158.3 x 286.8 x 100.2 mm (6.2 x 11.3 x 3.9")
Weight	1.5 kg (3.3 lb)
Enclosure material	UV stabilized polycarbonate, aluminum alloy
Pole mount diameter	25.4 to 60 mm (1 to 2.4") on pipe outer diameter
Wind loading	109.8 N at 200 km/h (25 lbf at 125 mph)
Weatherproofing	IPX6

---

## Hardware

Processor	Quad-core ARM® Cortex®-A53 at 1.4 GHz
Memory	DDR3L 512 MB
Networking interface	(1) 2.5 GbE RJ45 port (1) 10G SFP+ port
Max. power consumption	24W
Power method	Passive PoE 4-pairs (1, 2+; 3, 6-) (4, 5+; 7, 8-) Passive PoE 2-pairs (4, 5+; 7, 8-), for 44-54V DC only
Power supply	48V DC, 0.65A 2.5 GbE PoE adapter (Included)
Supported voltage range	44-54V DC 22-27V DC
GPS	Yes
Button	Factory reset
LEDs	Power, Ethernet, GPS
Ambient operating temperature	-40 to 60° C (-40 to 140° F)
Ambient operating humidity	5 to 95% noncondensing
Certifications	FCC, IC, CE

---

## Software

Operating mode	PtMP access point
Ubiquiti specific features	Wave AI, discovery protocol

<b>Services</b>	UISP, ping watchdog, NTP client, SNMP
<b>Tools</b>	Antenna alignment, discovery utility, ping, trace route, speed test, cable test, site survey
<b>Network</b>	Bridge mode
<b>Application requirements</b>	UISP: Version 2.4.205 and later

---

## System

<b>Total throughput</b>	5.4 Gbps
<b>Supported clients count</b>	31
<b>Max. range</b>	Connecting to a Wave Pro: up to 6 km Connecting to a Wave Long-Range: up to 6 km Connecting to a Wave Nano: up to 4 km Connecting to a Wave Pico: up to 0.9 km
<b>Encryption</b>	WPA2-PSK (AES)

---

## RF

<b>Operating frequency*</b>	57-71 GHz *Depends on regulatory region.
<b>Channel bandwidth</b>	2160, 1080, 540 MHz
<b>Operating channels*</b>	58320, 59400, 60480, 61560, 62640, 63720, 64800, 65880, 66960, 68040, 69120, 70200, 70560 MHz *Depends on regulatory region.
<b>Modulation</b>	16QAM, QPSK
<b>Antenna gain</b>	20 dBi
<b>Polarization</b>	Vertically linear
<b>Beamwidth</b>	Azimuth: 3 dB 90° Elevation: 3 dB 7°
<b>Electrical downtilt</b>	0°

---

## Back-Up RF

<b>WiFi standard</b>	802.11ax (WiFi 6)
----------------------	-------------------

**Operating frequency\*****US/CA**

U-NII-1 5150 - 5250 MHz  
U-NII-2A 5250 - 5350 MHz  
U-NII-2C 5470 - 5725 MHz  
U-NII-3 5725 - 5850 MHz

**Worldwide**

5150 - 5875 MHz  
\*Depends on regulatory region.

**Channel bandwidth**

20, 40, 80 MHz

**Modulation**

BPSK (1/2), QPSK (1/2), QPSK (3/4), 16QAM (1/2), 16QAM (3/4), 64QAM (2/3), 64QAM (3/4), 64QAM (5/6), 256QAM (3/4), 256QAM (5/6), 1024QAM (3/4), 1024QAM (5/6)

**Antenna gain**

13 dBi

**Cross-pol isolation**

18 dB

**Polarization**

Dual-linear

**Beamwidth**

Azimuth: 6 dB 95°  
Elevation: 6 dB 25°

**Electric downtilt**

0°

---

**LEDs****Power**

Flashing white: bootup in progress  
White: not connected to UISP application  
Blue: connected to UISP application  
Flashing blue: locate in progress  
Blue/white: firmware upgrade in progress

**Ethernet**

Flashing white: Ethernet traffic detected  
Flashing blue: SFP+ traffic detected

**GPS**

Blue: receiving at least (4) GPS satellite signal

[🔗 Compliance Information](#)

**Stay in Touch**



[Terms of Service](#) | [Privacy Policy](#) | [Legal](#) | [Cookies Settings](#)

© 2025 Ubiquiti, Inc. All rights reserved.